

The Hudson

1,858 SQFT. | 1,867 SQFT
2 BEDS · 3 BATHS

INSPIRATION FOR YOUR CUSTOM INNER-CITY DUPLEX...



The Hudson is a beautiful open concept duplex, perfect for inner-city Calgary. The beautiful home is the perfect investment property to create a home for yourself and a tenant. Both sides of the duplex feature a large master suite, perfect for relaxation after a long day. Pamper yourself in your large bedroom and stand along soaker tub. The open main floor is the perfect entertainment and family space for weeknight dinners and Sunday get togethers. The modern details in these homes will fit right in to any local community, and allow you to create your dream home anywhere you choose.

OUR "OVER AND ABOVE" WARRANTY

We are a member of the [Alberta New Home Warranty Program \(ANHWP\)](#) – meaning we meet their rigorous criteria for building excellence, outstanding customer service and performance that surpass the industry standards. We include a two-year material/labour warranty on all custom home services.

HAVE A PROJECT IN MIND?

LET'S START PLANNING YOUR DREAM HOME!

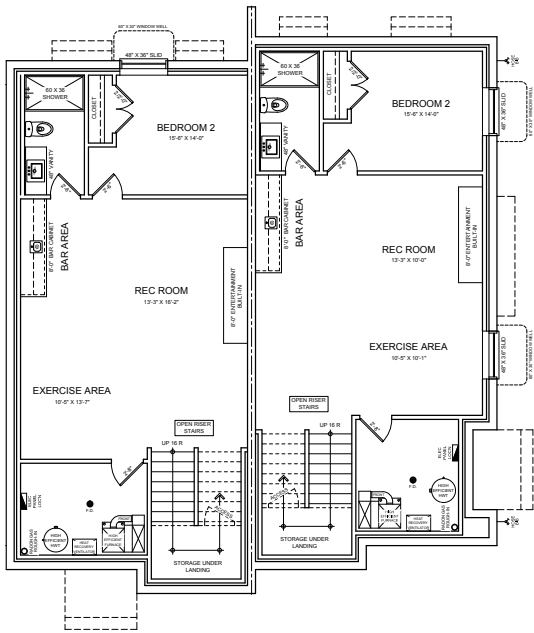
EMAIL
info@melansonhomes.com

PHONE
403-690-1000

THE HUDSON'S FEATURES

- Open Concept Kitchen
- Large Kitchen Island
- Built-in Entertainment Space & Fireplace in the Family Room
- Large Master Suite with Expansive Walk-in Closets
- Large Master Ensuite with Double Sinks
- Large Foyer Entrance with Bench Seating
- Large Mudroom Rear Entrance with Built-in Bench Seating
- Detached Garage
- Rooftop Patio
- Energy Efficient Home, includes:
 - Energy Efficient Windows
 - Energy Efficient Appliances
 - Home Energy Certification
 - LED Lighting

The Hudson by:
MELANSON
Homes & Renovations



Developed Basement

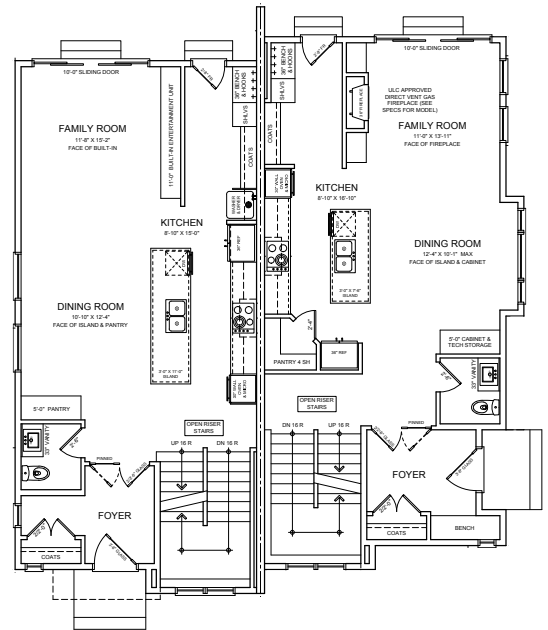
729 SQFT. | 711 SQFT.

- 1 Rec Room/Exercise Area
- 1 Built-in Wet Bar
- 1 Built-in Entertainment Unit
- 1 Bedroom
- 1 Full Bath
- 1 Furnace Room

Main Floor

892 SQFT. | 894 SQFT.

- 1 Open Kitchen/Dining & Family Room
- 1 Large Kitchen Island
- 1 Built-in Entertainment Unit or Fireplace
- 1 Foyer Entrance with Bench Seating
- 1 Large Rear Mudroom with Built-in Bench Seating
- 1 Half Bath



Upper Floor

966 SQFT. | 973 SQFT.

- 1 Master Suite
- 1 Expansive Walk-in Closet
- 1 Master Ensuite with Dual Sinks
- 1 Additional Bedroom with Ensuite & Walk-in Closet
- 1 Laundry Room

