

The Hayden

1,994 SQFT · 3 BEDS · 3 BATHS

INSPIRATION FOR YOUR CUSTOM INNER-CITY DUPLEX...



With its contemporary, chic exterior, The Hayden inner-city duplex plan always turns heads. It is the perfect custom infill floorplan for busy professionals, young families, or anyone looking to make the most of their space. Live in one half, and sell or rent the other. The main floor is open and has a natural and comfortable flow for family and guests through the kitchen and living areas. Imagine the memories you will create and the gatherings you will host in your beautiful and functional family room and kitchen. The second floor features a luxurious master bedroom with an ensuite bathroom featuring a standalone tub and a large walk in closet. There are two additional bedrooms with large closets and a conveniently located laundry room. Dream and discover how you can customize this floorplan for your next infill project.

THE HAYDEN'S FEATURES

- Open Kitchen
- Kitchen Island
- Large Windows
- Large Master Bedroom Walk-in Closet
- Large Master Bedroom Ensuite with Double Sinks
- Family Room with Built-in Storage & Fireplace
- Second Floor Laundry
- Two Linen Closets
- Triple Pane Windows
- Tight Joist Space and Cantilevers Insulated 2lb Spray Foam
- Energy Efficient Home, includes:
 - Energy Efficient Windows
 - Energy Efficient Appliances
 - Home Energy Certification
 - LED Lighting
- Air Exchange System (HRV/ERV)

HAVE A PROJECT IN MIND?

LET'S START PLANNING YOUR DREAM HOME!

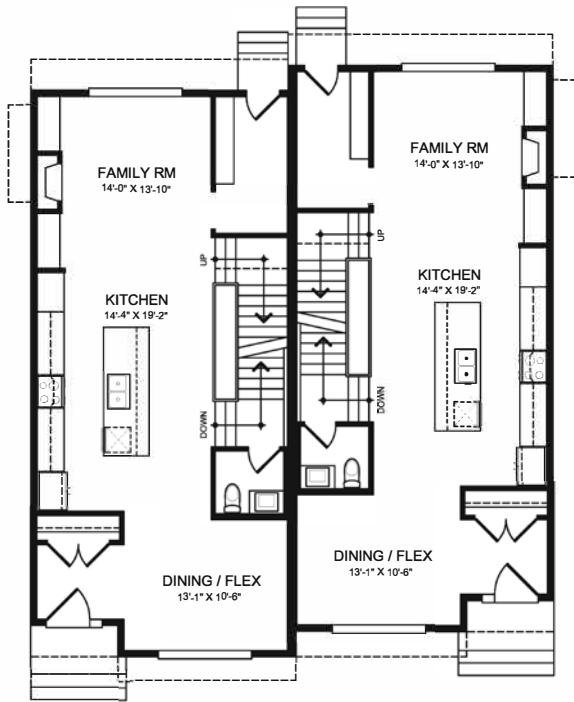
EMAIL

info@melansonhomes.com

PHONE

587-700-6660

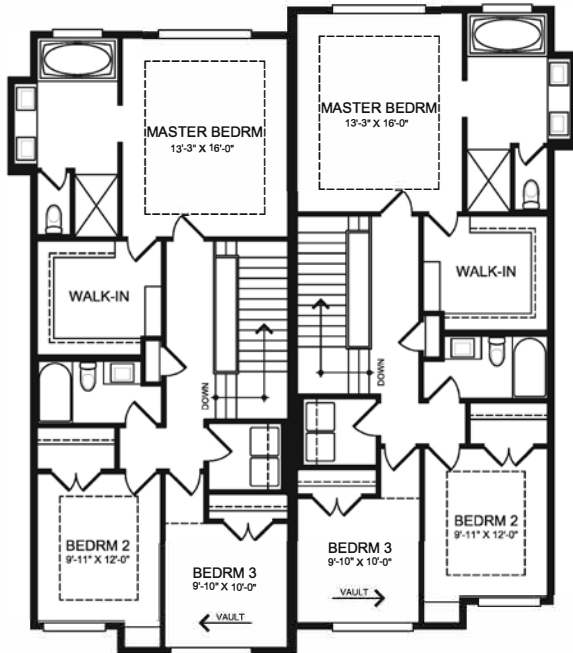
MELANSON
Homes & Renovations



Main Floor

942 SQFT. (X2)

- 1 Open-Concept Kitchen/Family Area
- 1 Dining/Flex Room Room
- 1 Half Bath



Upper Floor

1052 SQFT. (X2)

- 2 Bedrooms
- 1 Master Bedroom
- 1 Master Ensuite with Two Sinks
- 1 Master Walk-in Closet
- 1 Full Bath
- 1 Laundry Room

OUR "OVER AND ABOVE" WARRANTY

We are a member of the [Alberta New Home Warranty Program \(ANHWP\)](#) – meaning we meet their rigorous criteria for building excellence, outstanding customer service and performance that surpass the industry standards. We include a two-year material/labour warranty on all custom home services.

The Hayden by:
MELANSON
 Homes & Renovations